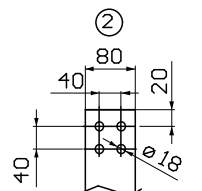
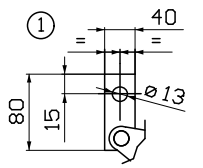


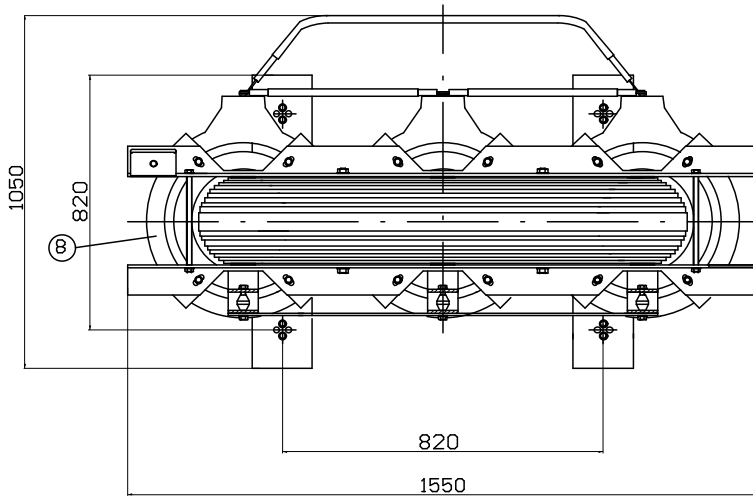
Tolleranza su tutte le quote:  $\pm 20$ mm  
Tolerance on all dimensions:  $\pm 20$ mm



Tipo-Type: kVA: 1000 Hz: 50  
kV:  $10 \pm 2 \times 2$ , 5% / 0.4  
Gruppo-group: Dyn11  
Peso del trasformatore weight = 2400kg

Position	Direction
1-2	++
2-3	+
3-4	0
4-5	--
5-6	--

9	Ruote orientabili	Bi-directional wheels
8	Cassetta di centralizzazione	Auxiliary circuit box
7	Targa dati	Rating plate
6	Fori di traino	Pulling holes
5	Morsetti di terra	Earthing clamps
4	Morsettiera variazione AT	M.V. tap-changer
3	Golfari di sollevamento	Lifting lugs
2	Terminali BT	L.V. voltage terminals
1	Terminali MT	M.V. voltage terminals
Pos	Denominazione	Description



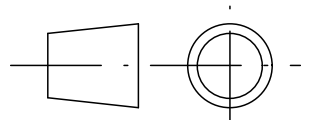
OVERALL DIMENSIONS

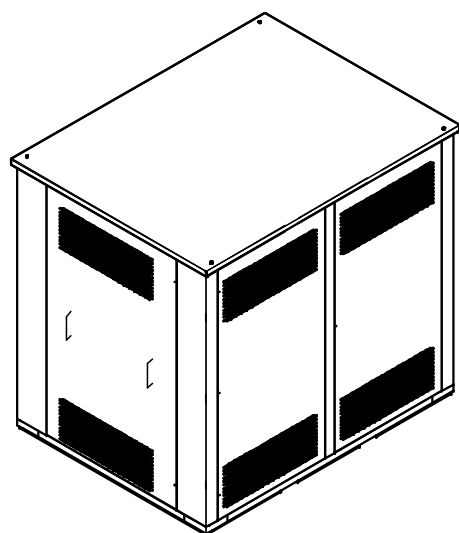
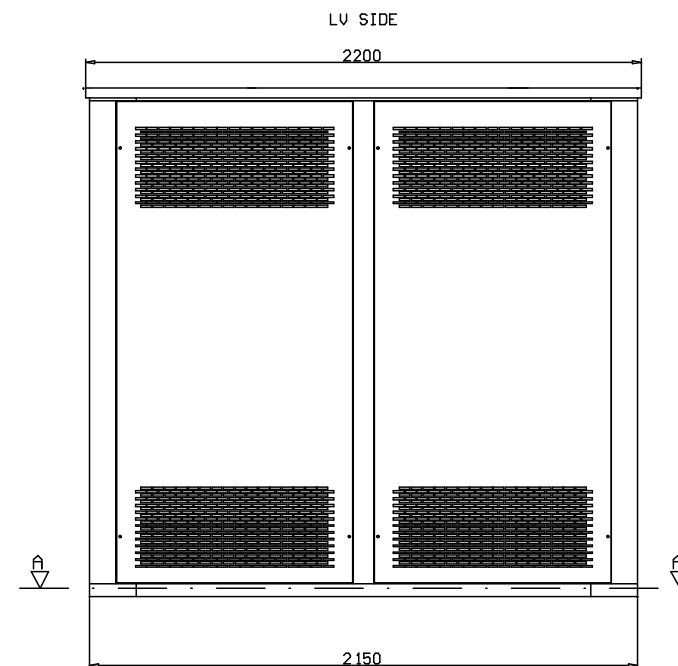
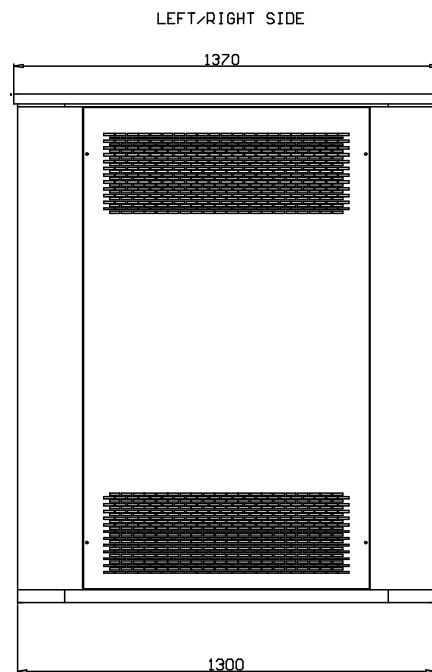
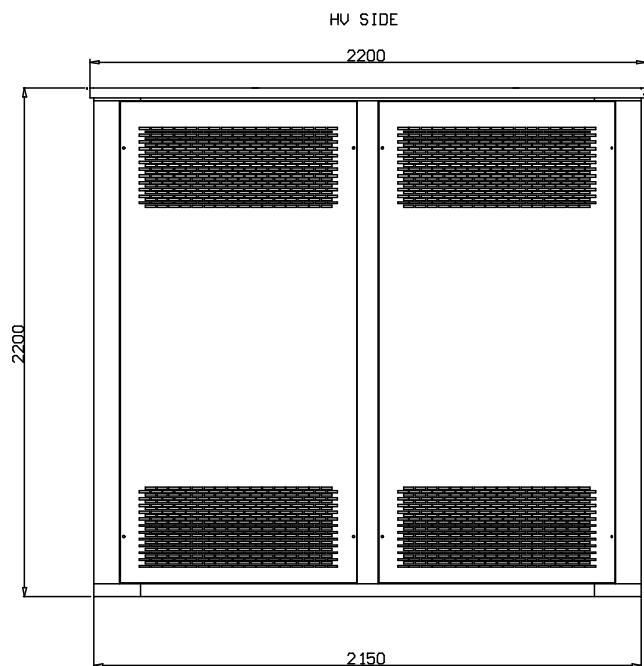
1000kVA 10kV Sheet n° 1/2

Serial number: 14.368.01:02R N° draw

Revision: 0 Date: 01/09/14 37 14

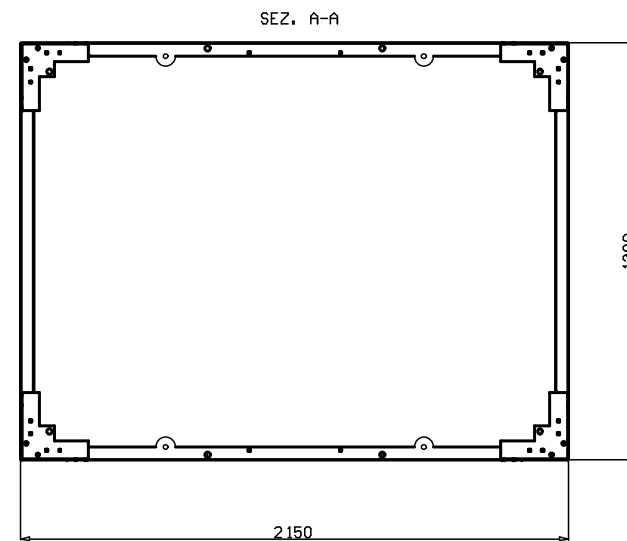
ART-TRA





Tolleranza su tutte le quote :  $\pm 20\text{mm}$   
 Tolerance on all dimensions :  $\pm 20\text{mm}$

Grado di protezione—protection degree: IP23  
 Peso box—box weight: 280kg



BOX IP23	1000kVA 10kV	Sheet n° 2/2	
	Serial number: 14.368.01#02R	N° draw	
ART-TRA	Revision 0	Date 01/09/14	37 14